

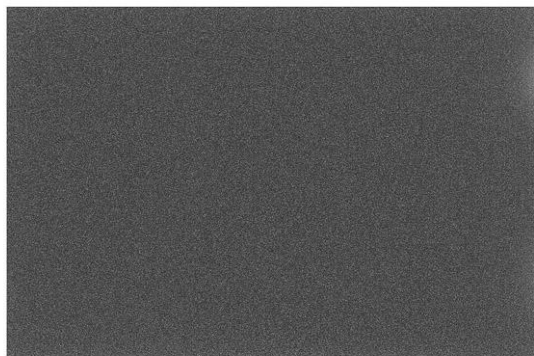
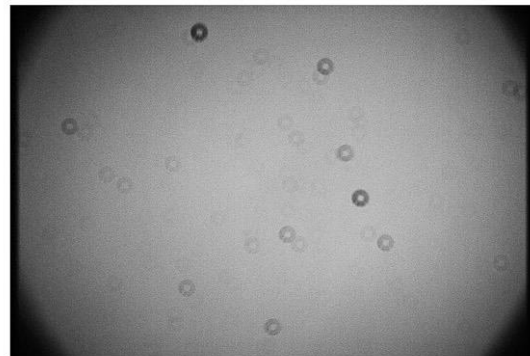
Input Einzelbild



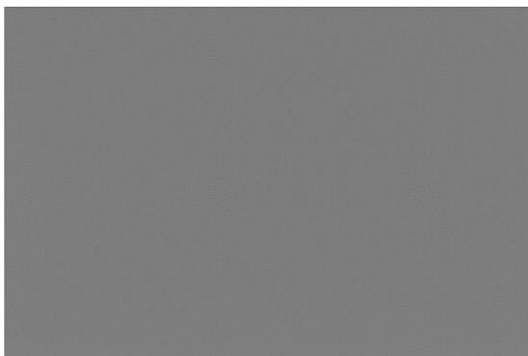
Summe unkalibriert



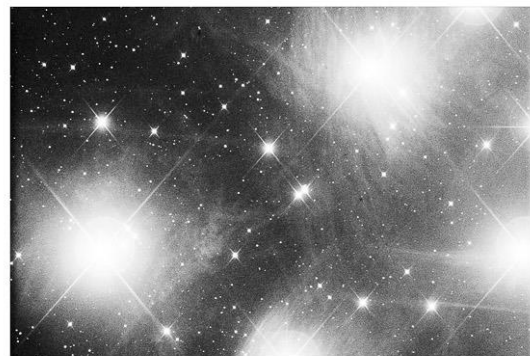
MasterFlat



MasterDark

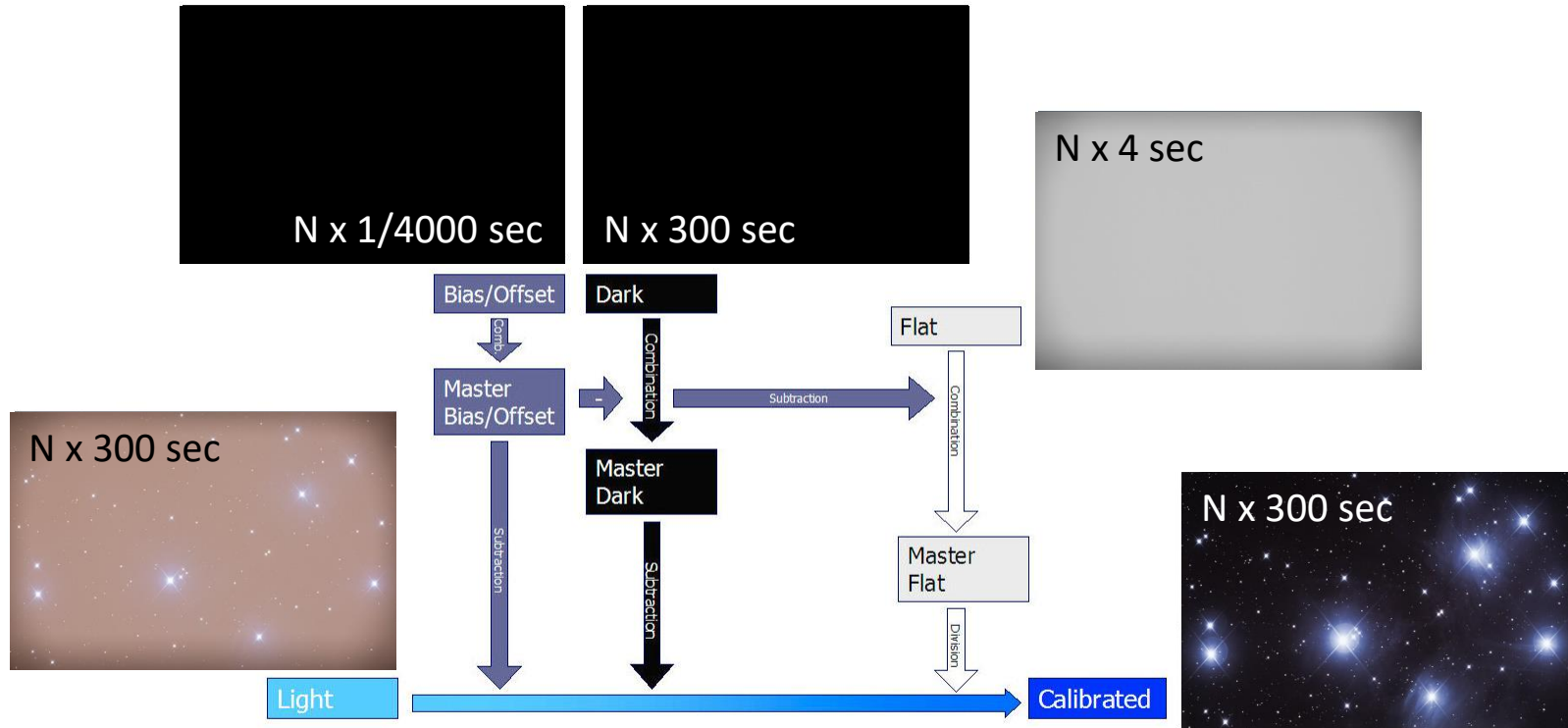


MasterOffset



Resultat kalibriert

Beispiel für Datenkalibration von MFT Astrofoto (mit stapeln von «Lights, Flats, Darks & Offsets»)



Bildfeld-Ausleuchtung («Flat») am MFT-Newtonfokus mit BIG Paracorr type2: Brennweite 1814 mm

49%

43%

100%

«Vollformat» Bildfeld
(Canon 6D)
23.9 x 35.8 mm
45 x 68 arcmin

(Norden oben)
Helligkeit in Ecken: > 40%

41%

41%

«Plejaden» M45 im Stier



Astrofoto mit dem MFT

Technische Daten:

Bildfeld: 45 x 68 arcmin

(0.74 arcsec/pixel)

mit BIGParaCorr Type2

Belichtung 18 x 300 sec.

Canon 6D, 800 ASA

15. Februar 2017

20:02 – 21:32 MESZ

Sky Quality Meter (SQM)

Himmelshelligkeit

19.25 mag/arcsec²

Seeing

FWHM 4.3 – 5.5 arcsec

Temperatur

+5 Grad Celsius

Roland Stalder



Einzelbild

«Galaxientrio» NGC 5985 - 5982 - 5981 im Drachen

Astrofoto mit dem MFT

Technische Daten:
Bildfeld: 28 x 42 arcmin
(0.65 arcsec/pixel)

Belichtung 12 x 480 sec.
Canon 40D, 800 ASA

14. Mai 2012
02:19 – 03:57 MESZ

Sky Quality Meter (SQM)
Himmelshelligkeit
19.63 mag/arcsec²

Seeing
FWHM 3.1 - 3.5 arcsec
Temperatur

+7 Grad Celsius

Roland Stalder

Kugelsternhaufen M13 und Galaxie NGC6207 im Herkules

Astrofoto mit dem MFT

Technische Daten:
Bildfeld: 28 x 42 arcmin
(0.65 arcsec/pixel)

Belichtung 30 x 360 sec.
Canon 40D, 800 ASA

7. - 8. Juni 2013
23:54 – 03:16 MESZ

Sky Quality Meter (SQM)
Himmelshelligkeit
19.60 mag/arcsec²

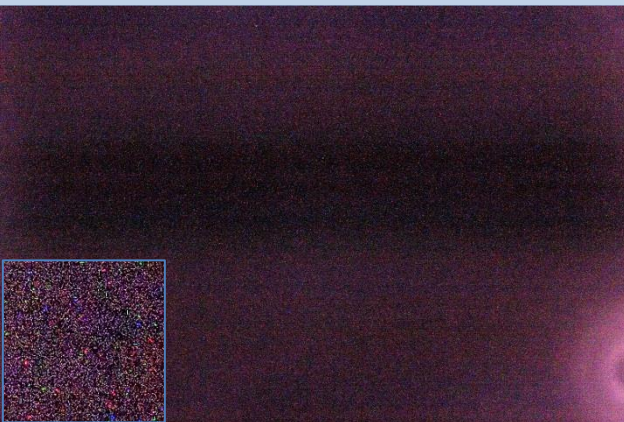
Seeing
FWHM 3.4 – 4.1 arcsec

Temperatur
+16 Grad Celsius

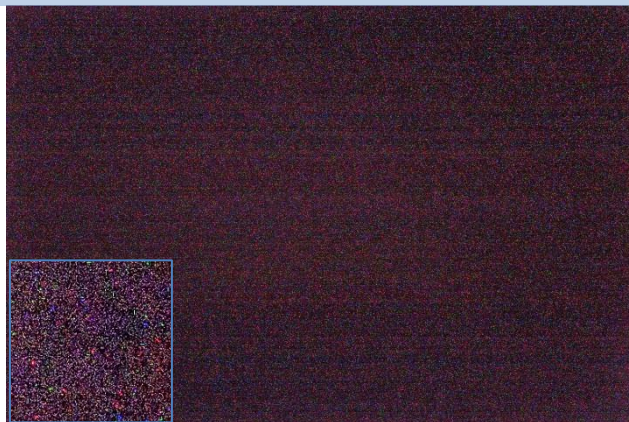
Roland Stalder



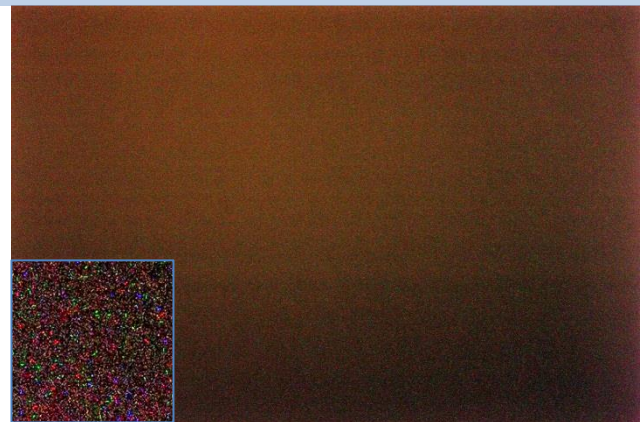
Einzelbild



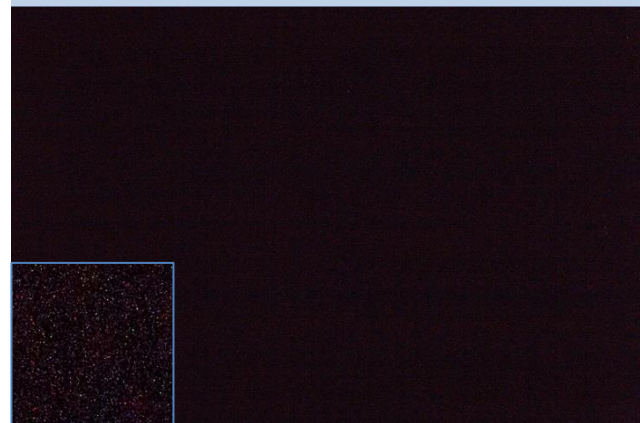
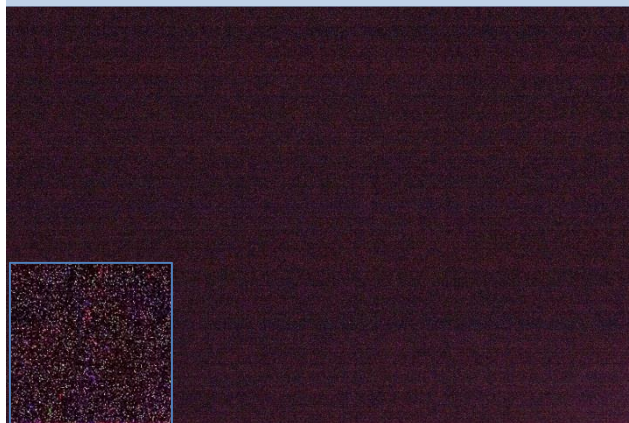
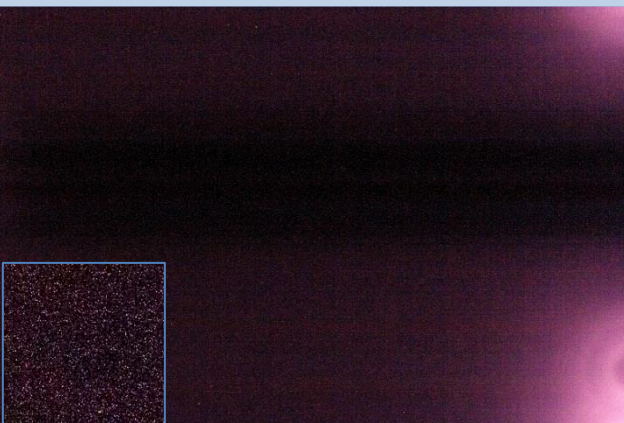
Canon 20D (8Mpixel @ 6.4 μ m)



Canon 40D (10Mpixel @ 5.7 μ m)

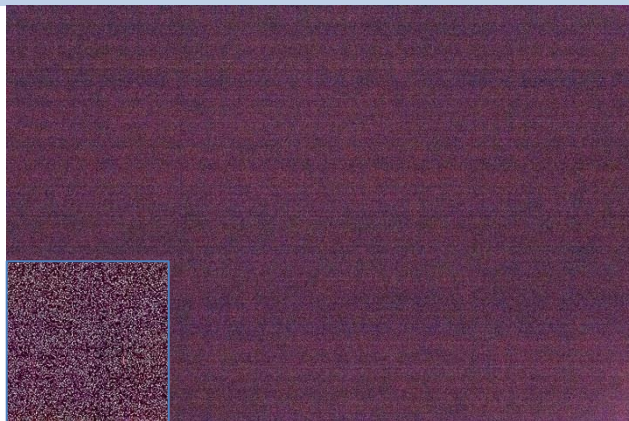


Canon 6D (20Mpixel @ 6.55 μ m)

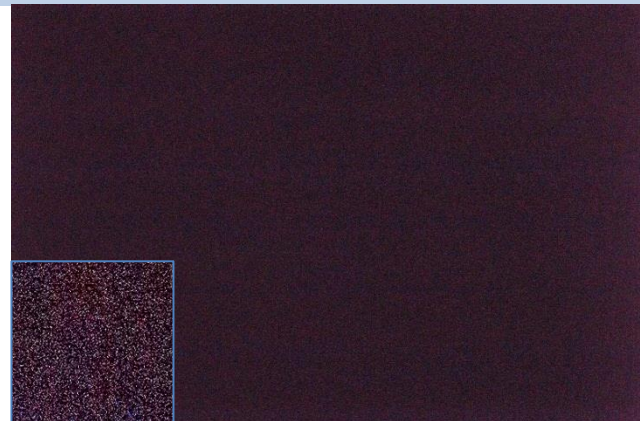




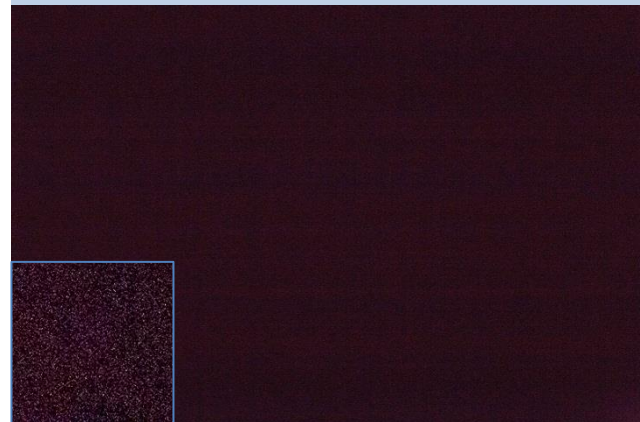
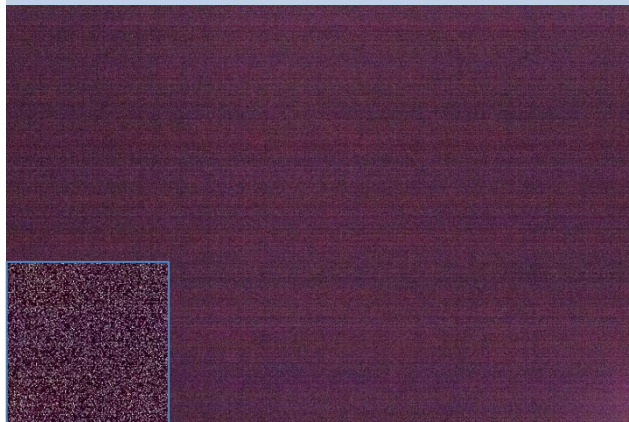
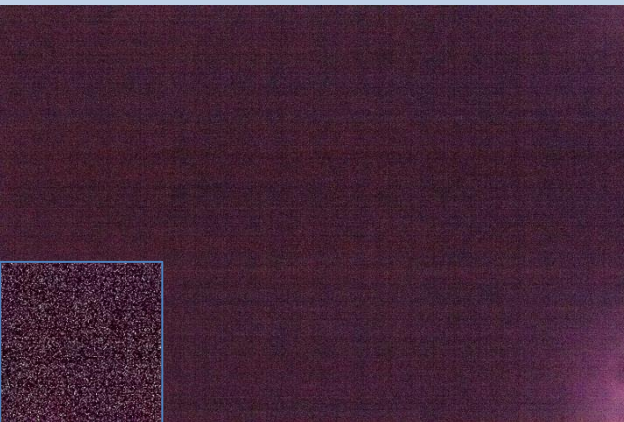
Canon 20D (8Mpixel @ 6.4 μ m)

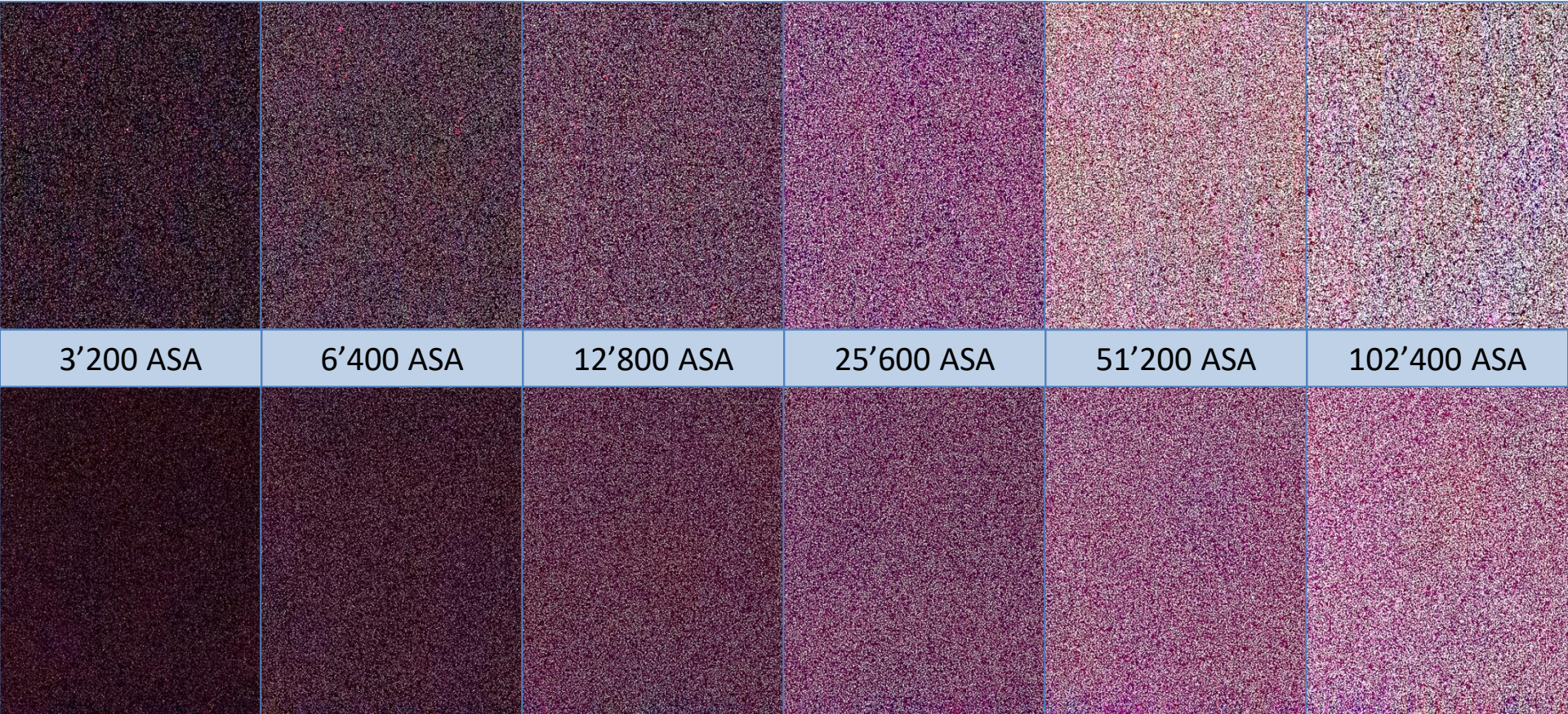


Canon 40D (10Mpixel @ 5.7 μ m)



Canon 6D (20Mpixel @ 6.55 μ m)





3'200 ASA

6'400 ASA

12'800 ASA

25'600 ASA

51'200 ASA

102'400 ASA

0deg C